

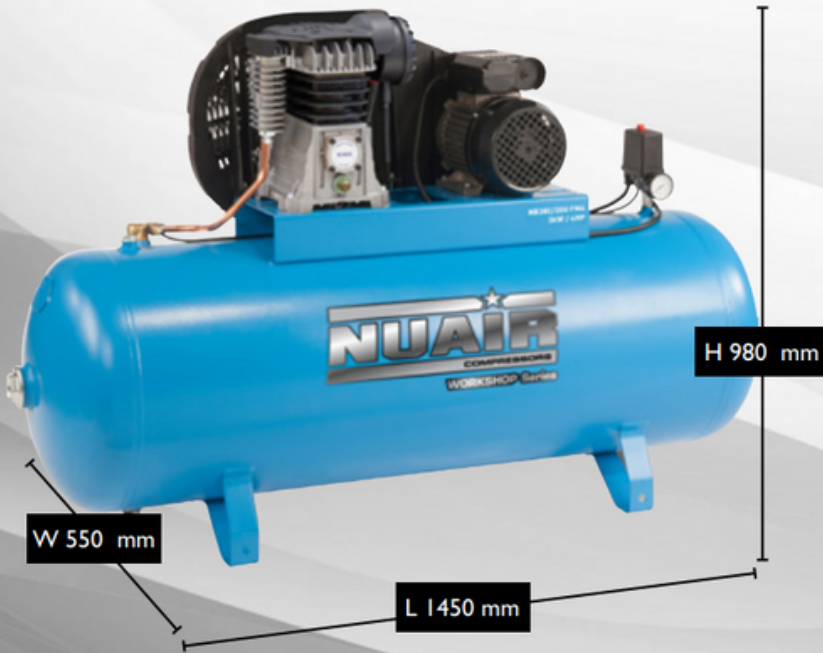
DATA SHEET

B3800B-PRO/200 FM4 UK

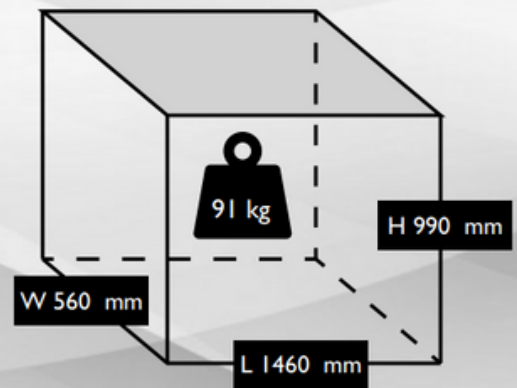
S-36LN684FPSI44



UNIT DIMENSIONS



PACKAGE DIMENSIONS



TECHNICAL DATA

	Max. Pressure	10 Bar / 145 PSI
	Power	4 HP / 3.0 kW
	Capacity (displacement)	18 CFM / 495 L/Min
	Voltage	230 V / 50 Hz
	Supply	20 Amp
	Pump	B38B PRO (370001B)
	dB(A)	77
	Dimensions L x W x H (unit)	1450 x 550 x 980 mm

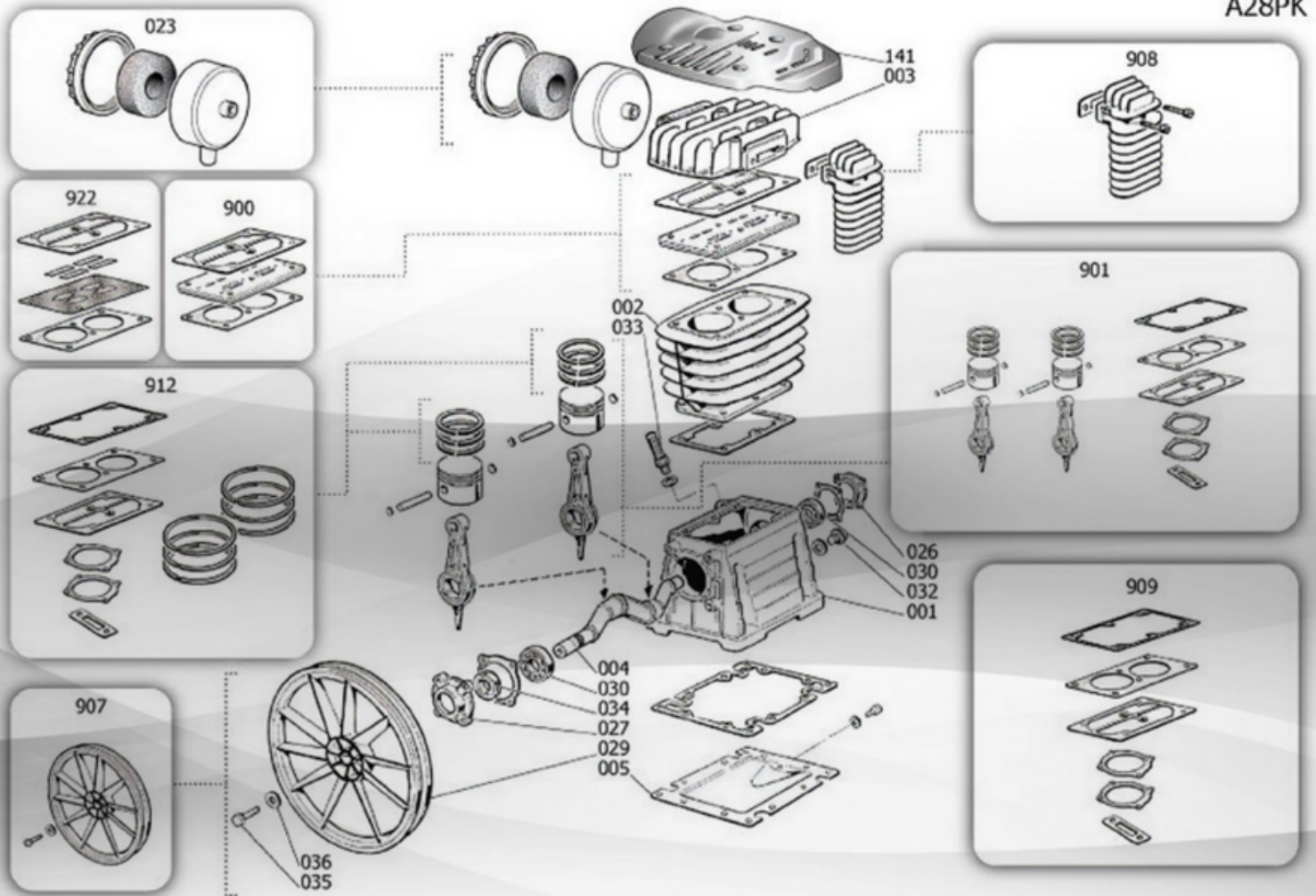
	Dimensions L x W x H (boxed)	1460 x 560 x 990 mm
	Weight	91 kgs
	Motor Speed	2800 RPM
	Oil Capacity	1 Ltr
	Receiver Size	200 Ltr
	Head Bolt Torque	27 Nm
	Cable Length	2 Mtr
	Pump Speed	1400 RPM
	Outlet Thread Size	1/2" BSP Female Thread
	Outlet Thread Size 2	N/A

DATA SHEET

B3800B PRO PUMP

S-370001B

B3800B-PRO/200 FM4 (S-36LN684FPS144)



A28PK

COMPONENTS / SERVICE PARTS

Position	Part No.	Description
2	S-9428042	Cylinder
3	S-3860410	Head
23	S-9434M04	Air filter
900	S-9434A66	Valve Plate
901	S-9434B82	Piston & Con Rod compl
909	S-9434F07	Gasket Kit
912	S-9434C09	Piston Ring Kit

Part No.	Description
S-PK-B28.B38/PRO	Service Kit
S-9602024	NRV Pastel
S-9062018	NRV Spring
S-9048003	NRV
S-4100688	Pressure Switch
LUB-PIST-ILT	Lubricant
S-9612113	Run Capacitor
F-009200105	Start Capacitor
S-9075021	V Belt